

MITCHELL MIDDLE SCHOOL

spotlight

THE OFFICIAL NEWSLETTER OF MITCHELL MIDDLE SCHOOL

September, 2017

Principal's Message

Welcome back! We can't wait to get started! I hope everyone had a great summer and you all had time to relax and play. My family and I had an excellent summer camping all around southern Manitoba. This is a picture of us after a short hike in Clear Lake, Manitoba.



A huge welcome to all of our new students and families to MMS! We can't wait to see you! A number of new families have moved into Mitchell over the summer. We are up to about 320 students this year. This is up significantly from the start of last school year.

We have some returning and new faces to our school staff as well! Mrs. Barkwell is new to Mitchell this year teaching grade 6 Social Studies and grade 7 Science. Returning to Mitchell are Mrs. Loewen (gr 5 homeroom) and Mrs. Hinatsu (grade 6 homeroom shared with Mrs. Barkwell). We welcome EAs Ms. Koop and Ms. Horsfall. Filling in to start the year is Ms. Penner (EA) and Mr. Fender (PE). We would also like to welcome our student teachers this year, Larissa Wiebe, Janeen Peters, Melanie Friesen, David Kroeker, Tracey Sawatzky, and Scott Hutchinson



Our priorities for the year will focus on the following ideas:

1. Providing all students opportunities to learn the skills, disposition, values, and knowledge required for a productive and wholesome life.
2. Building school culture to enable all students to learn.
3. Partnering with our communities to enable all students and staff to learn. These are similar to the divisional priorities and focus on the overall development and happiness of all of our kids.

As a school we will be focusing on the following goals in 2017-18 to ensure academic, intellectual, emotional and social engagement for all of our kids are:

1. By June 2018, All MMS students will show a mathematical mindset (strong character skills which include growth mindset, perseverance, mathematical thinking, enjoy math, willingness to try different methods) when approaching math class and math topics.
2. By June 2018, all students will have an understanding of their own reading skill set and develop a plan for improvement.
3. By June 2018, all MMS students will view themselves as critical thinkers and use those skills across the curricula.
4. By June 2018, all MMS students will understand, and be able to articulate and perform their role(s) within the Ultimate Warrior Core Values to gain a sense of belonging to MMS (Be Ready to Learn (5), Be Ready to Help (6), Be Ready to Participate (7), Be Ready to Serve (8).

The Ultimate Warrior Grade Level Grade Level Core



WE ALL BELONG



Mitchell Middle School

I look forward to seeing Mitchell Middle soon!

Keep in touch!

Sincerely,

Andrew Mead

Principal

amead@hsd.ca

Office: 204-320-9488

Cell: 204-371-6278

Attendance Procedures

Absences

Homeroom teachers take attendance during AM Homeroom time (between 9:05 AM and 9:10 AM) and PM homeroom time (between 12:50 PM and 1:00 PM). Any child not accounted for after 9:10 AM (or 1:00 PM) will be marked absent. At approximately 9:15 AM, Mrs. Enns will begin to call parents/guardians of children who have not been excused. (IE parents/guardians have not called the school to excuse the absence or late).

To help reduce the number of phone calls made by Mrs. Enns, parents/guardians are asked to call the school office (204) 320-9488, email Mrs. Enns (wenns@hsd.ca) or call/text Mr. Mead at (204-371-6278) (or email: amead@hsd.ca) any time prior to 9:00 am the day of the absence. If you know your child will be late or will miss school, please contact the office any time before that date to inform the school of the absence.

Please contact the office directly regarding all matters of excusing absence or lates. This will ensure that your child's attendance is marked accurately. Please leave a voicemail if you call before or after regular office hours which are typically 7:30 AM – 4:30 PM.

Lates

If a child arrives after 9:10 AM (or 1:00 PM) they will be asked to check in at the office. A late slip will be given to the child to bring to the teacher they have at the time they arrive. At that time Mrs. Enns will change the attendance from absent to late. Students are asked to go to their locker and quickly get to the class they should be in.

Entrance Doors

All students may enter the building using the front doors by the main office or through the doors by the Tech Lab. Between 9:15 AM and Noon the only doors that will remain unlocked are the ones by the front office and the Home Ec. Lab (staff entrance – east side doors near the parking lot). During the recess and lunch breaks the back doors to the field and the doors by the Tech Lab will be unlocked for students to go outside. At 1:00 all doors will be locked except the front doors and the doors by the Home Ec. Lab (staff entrance).

Registration Update Please!

Parents, when you dropped in at *Meet the Teacher* on September 6th, you received the *HSD/MMS Registration Information Update* form to read, fill out, sign and get back to us (if you could not make it here that day, we've mailed it to you). If you've already done all that, thanks! If not, please return the completed form to the school a.s.a.p.

Getting all this paperwork done within the first few days of school will be most helpful to our office staff as well as to teachers. Please include your email address, as this will help us communicate with you effectively.

MMS Daily Schedule

8:50	First bell – Students come inside
8:57	Students report to homerooms/area or Religious Opening Exercises
9:00	Religious Opening Exercises
9:05	Students report to homerooms
9:08	School starts – Announcements/O Canada
9:10	Period 1
9:50	Period 2
10:25	5/6 Recess
10:30	7/8 Break
10:40	Period 3
11:20	Period 4
11:55	Lunch
12:15	Noon Recess (Period 5)
12:45	Homeroom Time
1:00	Period 6
1:35	Period 7
2:10	5/6 Recess
2:15	7/8 Break
2:25	Period 8
3:05	Period 9
3:40	Bus dismissal
3:45	General dismissal

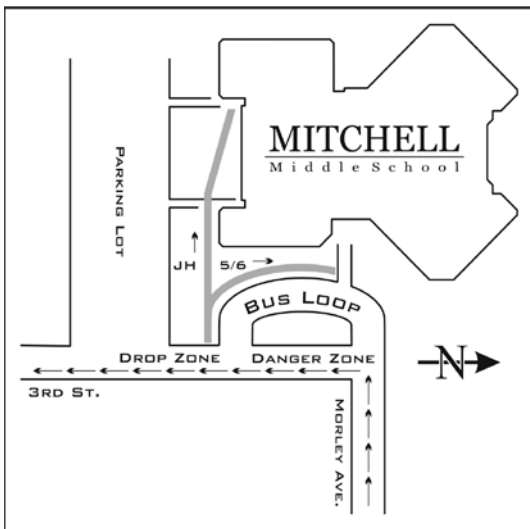
Vehicular Traffic

Safety Is Still First!

Some things do not change... safety remains at the top of our list of concerns for our students. Morning arrivals and afternoon departures are potentially the two most dangerous times of the day at school. With numerous buses coming through the bus loop in the morning and after school, along with a number of parents coming by to drop off or pick up their children, and many other students traveling on foot or by bicycle, traffic is heavy at those two times of the day. **Please!, please!, please!** **pay close attention to the following rules and directives designed to keep your children safe:**

Drop off and pick up your children on the west side of Third Street in front of the school and toward the south end of the bus loop (see the "Drop Zone" area indicated on the accompanying map). Please approach the school from the east on Morley so that all traffic moves past the school in the same north/south direction. Do not drive through the bus loop between 8:30 and 9:00, nor between 3:30 and 4:00.

Do not drive into the parking lot to drop off or pick up children! The parking lot does not have room to safely turn vehicles around, especially when children may be near. Thank-you for continuing to work with us to make the traffic part of our operation run as smoothly and safely as possible.



Please remind your students when walking to school to walk on the left side of the street facing traffic and when riding their bikes to stay on the right. Students walking or biking along 3rd Street between MMS and MES should use the sidewalk.

We are very concerned!

We are very concerned about the serious and increasing danger of students crossing the #52 highway on foot or on their bicycles. Several near misses have been reported where unsupervised students came dangerously close to being hit by motorists as they were

crossing the highway. Parents, if you live south of the #52 highway, we at Mitchell Elementary School and Mitchell Middle School urge you to take advantage of Hanover School Division buses and not to allow your children to walk or ride their bikes to and from school without adult supervision.

The RM of Hanover and the Mitchell LUD are working with the Manitoba Department of Highways to provide appropriate infrastructure that ensures a safe place to cross for pedestrians and cyclists. For now, please help ensure your children's safe transportation to and from school by not allowing them to walk or cycle if it requires crossing the highway unless they are supervised by an adult.

Thank-you for helping keep our/your kids safe!

*Mitchell Elementary School
Mitchell Middle School*

MMS Strong Connections

We are planning our annual Mitchell Middle School *Strong Connections* event for Friday and Monday, **September 15th and 18th**. *Strong Connections* is intended to give teachers and students a head start with developing good relationships that will benefit all students both academically and socially.

Strong Connections is a program designed to enhance the start-of-year assessment of each child. *Strong Connections* activities are not tests, but rather they are tasks to help us get to know our students and how they learn in order to know where to begin with instruction.

Rationale for Strong Connections

Hanover School Division priorities state the need for meaningful assessment. *Strong Connections* is a form of authentic assessment done in practical and useful ways. The purpose of *Strong Connections* is to enhance start-of-year classroom assessment with all children. This provides an opportunity for teachers to not only assess, but to get to know your child better. It will help teachers plan for instruction that will effectively address unique learning needs early in the year.

What will teachers learn through Strong Connections?

Teachers working individually with their students in an atmosphere of support and encouragement have an opportunity to collect firsthand information about such things as:

- How they learn.
- Their confidence as learners.
- The learning strategies they possess.
- Their reading, writing and mathematical skills.
- Their approach to problem solving.
- Their attitudes towards school and learning.
- Their ability to reflect upon and set goals for their learning.

How will Strong Connections work?

September 15th and 18th are the days designated for students to attend school one day out of the two. With half the students present, homeroom teachers will have the opportunity to meet one on one with each student to participate in assessment activities in Language Arts, Mathematics, and other subjects. This is an opportunity for teachers to gather information about each child's learning that may not be evidenced during whole class instruction. It is also an opportunity to further develop the teacher-student relationship.

Groups of students will be scheduled to be in homerooms for half of the morning and half of the afternoon. The other half morning and afternoon they will be joining larger 'cross-grade' groups to participate in special athletic and artistic activities. These activities are intended to be particularly enjoyable while helping develop relationships with students in other grades.

On the dates of the program, there will be no regularly scheduled classes. Students will get to and from school in their normal manner (bus or other). We will be sending home further information shortly to let you know which of the two days your students are to be at school. We have coordinated this with Mitchell Elementary School so that no family will have students scheduled on both days. Please call the school if you have any questions.

Mitchell Middle School Student Council 2017-2018

Mitchell Middle School is looking forward to the start of a new school year and is looking for students to participate on the Student Council. Mitchell Middle School's Student Council will be responsible for several events and activities this year, including fundraisers, school spirit activities, community service projects, and other events to involve all students in the Mitchell Middle School experience.

The council positions are all student/peer elected and will consist of the following: President (8th grade), Vice President (7th grade), Treasurer (all grade levels), Secretary (all grade levels), and a representative from each grade level. Students who are interested in student council must:

- Be flexible
- Have and maintain good grades
- Exhibit the potential for leadership
- Display positive classroom behavior
- Have a genuine interest in the welfare of others
- Consistently portray qualities of responsibility, empathy, integrity, and perseverance

Candidate forms can be picked up at the library and are due on or before **Tuesday, September 19^h**. Student Council speeches and elections will take place **Tuesday, September 26th, 2017**. Grade level representative elections will take place on **Thursday, September 28th, 2017**.

For more information please direct your questions to Mrs. Loewen, Mrs. Hildebrand, or Ms. Goertz

Home Ec.

All Home Ec. Students are reminded to bring in all their sewing supplies when they come to their first class.

Canteen Workers

Students in Grades 7 and 8 wishing to work in the canteen may pick up an application from Mrs. Roy and return the completed form to Mrs. Roy by **Friday, September 8th**.

Canteen

Pizza will be available on Fridays starting **September 8th** for **\$2.00** a slice. Orders are taken at the canteen before 9:00 am.

6" Subway Sub sales will be on Wednesdays starting on **September 13th** for **\$4.75** each, and students may choose between ham, cold cut, and pizza subs. Orders may be placed before school at the canteen.

The canteen will officially be open starting **Tuesday, September 12th**. The following is a list of items for sale and prices are also posted by the canteen.

Canteen Items

Cool Foods

Ice Cream Sandwiches .75

Beverages

Chocolate Milk .75
Juice Box .50
Gatorade 2.00

Snacks

Hot Rod .50
Tuna & Crackers 1.50
Cheese & Breadsticks .50
Mini Ritz Bits .75
Granola Bars .50
Bear Paws .50
Chips 1.00
Fruit Snack .25
Fruit to Go .25
Fruit Cup .25
Wagon Wheel .50
Rice Krispies Squares .50

.....AND MANY MORE LIMITED TIME ITEMS

Music Notes



After a wonderful and busy summer with my family, I am returning to school this fall refreshed and committed to another fantastic year here at MMS, and I hope you are, too! An extra special welcome to our new Grade 5 students - welcome to the family!

* Grade 5 and 6 students will once again require a **Recorder** for music class. Recorders that were left here over the summer have been sorted into their new homeroom classes and are ready to go. Should you require a replacement recorder, you may purchase one directly from me for \$7.00.

* Grade 7 Band "First Note Night" –

On Monday, September 11th from 6:30 – 8:00pm, Grade 7 Band students are asked to attend a mandatory clinic for Grade 7 band students from across Hanover School Division.

This collaborative evening will bring together Band students from Grunthal, Kleefeld, Mitchell and Steinbach for an evening with a Specialist on their instrument, to enable all our students have the best start possible. These clinicians will go over how to put the instrument together, how to clean it and how to begin playing it with great sound and technique. Learning to play an instrument in this setting is ideal as the students will be in smaller groups and will be among other students who play the same instrument.

As the group will be very large with this many schools represented, we will be holding some of the sessions in Kleefeld School (Woodwinds and Percussion) and some in Mitchell Middle School (Brass). Bussing will be provided for those students who will play in Kleefeld.

It is important for every student to be there. If you know already that you have a conflict that cannot be changed, please let me know ASAP.

Students will NOT need their instruments in class until after the September 11th evening session.

Concert Dates – please check the HSD calendar that has been sent to all households for our Christmas Concert dates and mark them on your calendars now to avoid conflicts!

* The **MMS Band Booster** / Parent Organization is seeking a few more parents to help organize fundraising and special events. Can you help?

* **Choir for Grade 7 and 8** students is optional, and will take place every Tuesday and Thursday from 12:15pm - 12:45pm beginning after Cross-Country season.

* **Jazz Band** – If there is sufficient interest, Grade 8's will again have the option of joining Jazz Band which will rehearse once per week at 8:00am. More information to follow in October.

* **Eastman School Choral Workshop Day and Concert** - for students in our region from Grades 5 thru 12, and is set for Friday, October 15th. Each school is allowed to send just 20 students from each grade level to this event. Information and permission slips will be coming home shortly with select students.

And with that – I look forward to a wonderful year of making music with your children!

Shannon Sawatzky

Athletic Department



Terry Fox Run:

- This year's Terry Fox Run will take place on Thursday September 28th from 2:30 - 3:30 pm.

Cross Country Run:

- All grade 5-8 students can sign-up for the cross country run team.
- Cross Country Run # 1 - Friday Sept. 22nd @ Steinbach Soccer Complex (tentative start time 1 pm).
- Cross Country Run # 2 – Friday Sept. 29th (tentative start time 1 pm).
- Provincial Milk Run - date TBD.

Volleyball:

- This year's volleyball season begins on Tuesday October 3rd.
- Grade 7 & 8 girls have tournaments on Tuesday's and the grade 7 & 8 boys have tournaments on Thursday's.
- All tournaments will start at 5:30 pm.
- If you are interested in coaching one of our teams this year please contact Bud Penner or Deryk Tufford at 320-9488 or email bpenner@hsd.ca dtufford@hsd.ca.

Printed Newsletter

In an effort to reduce the amount of paper Mitchell Middle School uses to print monthly newsletters this will be the only newsletter we will print for all students. Starting next month we will be emailing our newsletter to all parents/guardians and posting it on our website (<http://mms.hsd.ca/>)



We are happy to continue to provide printed copies of our newsletters to any family that would like it. To be added to the list of paper copies we send home please call the school office at (204) 320-9488, email Mrs. Doerksen (andoerksen@hsd.ca).

Connect with Mitchell Middle School

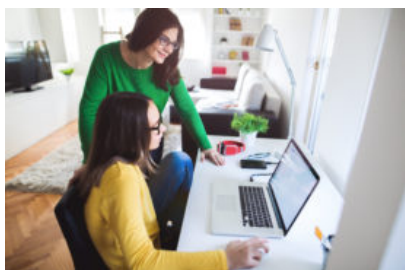
To get a glimpse into what happens every day at Mitchell Middle School please follow our social media feeds.

We are on Twitter and Instagram and we will be posting some images of student work and students and teachers showing what they know, how they learn, how they interact and the amazing things that happen in and around our school every day. We will respect HSD permissions to publish information parents/guardians sign at the beginning of the school year (HSD Permission to Publish Form). There are updated forms that parents will receive as part of the registration verification that will be sent home. Forms will also be posted on the HSD website and school websites.

To follow along please connect with us on Twitter and Instagram at @MMShanover.



Introducing the HSD Parent Portal



Stay connected and informed. The new HSD Parent Portal is a communications tool designed to enhance and increase parent/guardian involvement in the education of their children, by providing secure online access to their child's student information. With a single username and password, parents can access the following data for each of their children attending an HSD school:

Student Information	Attendance Information
School Fees Account	Permissions & Consent Forms
Report Cards	School Information
Grad/Credit Summary	Change of Contact Form

Allergy Alert!

We have multiple students who have severe, life-threatening nut allergies. We are encouraging parents to keep this in mind as you pack lunches/snacks for your children. Please avoid all nut products.

Also, please be mindful that strong perfumes can cause an adverse reaction for some students and staff.

Parent Council

We would like to thank the existing members for the support that the Parent Council provides for our school. We would gladly have another two or three energetic and creative parents take up the challenge of helping our school continue serving its community well. Please call Mr. Mead at 204-320-9488 or 204-371-6268 (call/text) or email amead@hsd.ca if you are interested.

Jamie Karr
204-320-1663
karmj@gmail.com

Charmaine Toews
204-326-9699
charmainetoews@gmail.com

Pam Kehler
204-326-9583
pam@kehler.ca

Naomi Streit
204-371-9938
naomiharder@hotmail.com

Heather Loewen
204-320-9488
hloewen@hsd.ca

Andy Mead
204-371-6278
amead@hsd.ca

Notice-Religious Exercises-Mitchell Middle School 2017-2018

The Board of Trustees of the Hanover School Division has received petitions requesting that religious exercises be held in Mitchell Middle School during the 2017-2018 school year.

The petitioners have specified their desire for the recitation of the Lord's Prayer and the reading of a Bible passage or story from the Bible.

As the petitions bear the signatures of parents representing more than 60 students in the school, the Board of Trustees of the Hanover School Division has authorized religious exercises, as specified above, to be held before the official instructional day, from 9:00 a.m. to 9:05 a.m., in a designated common area of the school.

Provincial and divisional guidelines will be followed. These guidelines are available from the school office, the divisional administration offices, or on the web site at www.hsd.ca.

Only children of parents who have signed or joined the petition may participate. Parents may join the petition by forwarding a signed note to the Board of Trustees of the Hanover School Division (forward to Mitchell Middle School), indicating the name and the grade of the students they are signing for. _____

Notice-Religious Instruction-Mitchell Middle School 2017-2018

The Board of Trustees of the Hanover School Division has received petitions requesting that religious instruction be held in Mitchell Middle School during the 2017-2018 school year.

The petitioners have specified their desire for the Discovery Time program offered by Child Evangelism Fellowship.

As the petitions bear the signatures of parents representing more than 25 students in the school, the Board of Trustees of the Hanover School Division has passed the required by-law permitting religious instruction, as specified above, to be offered by volunteers during designated half-hour per week classes.

Provincial and divisional guidelines will be followed. These guidelines are available from the school office, the divisional administration offices, or on the web site at www.hsd.ca.

Only children of parents who have signed or joined the petition may participate. Parents may join the petition by forwarding a signed note to the Board of Trustees of the Hanover School Division (forward to Mitchell Middle School), indicating the name and the grade of the students they are signing for.

Practice of Religion in Hanover School Division

As a Manitoba public school division, the Hanover School Division is obligated to comply with the provisions of The Public Schools Act and provincial guidelines governing the implementation of religious exercises and religious instruction. The Public Schools Act states that public schools must be non-sectarian. Religious exercises and religious instruction in public schools may only be implemented by school boards in a manner consistent with the Act and departmental guidelines after a parent petition is presented to the school board. Petitions must be submitted annually. The Hanover School Division will continue to provide for appropriate religious exercises and instruction consistent with provincial and divisional guidelines.

SEPTEMBER

2017

Sun	Mon	Tues	Wed	Thurs	Fri	Sat
					1	2
3	4 Labour Day (No Classes)	5 Admin/PD Day (No Classes) Meet the Teacher Evening 4:30 – 6 pm	6 Day 1  Welcome!	7 Day 2	8 Day 3 Double Cheese Pizza \$2.00	9
10	11 Day 4 Canteen Workers Application Forms Due	12 Day 5	13 Day 6 Sub Sandwich \$4.75	14 Day 1	15 Day 2 Strong Connections Day 1 Pepperoni & Mushroom Pizza \$2.00	16
17	18 Day 3 Canteen Opens Strong Connections Day 2	19 Day 4 Student Council Candidate Forms Due	20 Day 5 Sub Sandwich \$4.75	21 Day 6	22 Day 1 HSD Cross-Country Run #1 Pepperoni/Cheese Pizza \$2.00	23
24	25 Day 2	26 Day 3  Student Council Speeches & Elections	27 Day 4  Terry Fox Run Sub Sandwich \$4.75	28 Day 5  Student Council Grade Level Representative Elections	29 Day 6 HSD Cross-Country Run #2 Ham & Pineapple Pizza \$2.00	30
						